

## Stylish Living in Prime Philadelphia Location!



2019 Pemberton St, Philadelphia, PA 19146

- » Beds: 3 | Baths: 2 Full
- » MLS #: PAPH2477956
- » Townhouse | Lot: 2,070 ft<sup>2</sup>
- » Spacious Living: Open-concept area with hardwood flooring and crown molding.
- » Modern Kitchen: Features an island, rich wood cabinetry, and stainless steel appliances.
- » More Info: [2019PembertonSt.com](http://2019PembertonSt.com)



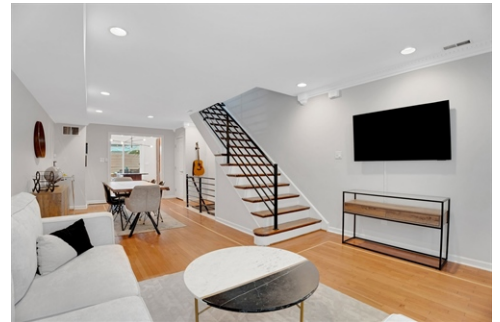
Eric Fox  
(267) 625-4504 (Eric Cell)  
[eric@efoxhomes.com](mailto:eric@efoxhomes.com)  
<http://www.efoxhomes.com>



THE ERIC FOX TEAM

Compass  
1430 Walnut Street  
3rd Floor  
Philadelphia, PA 19102  
(267) 435-8015

\$ 775,000



Don't miss this incredible opportunity to live just steps from Loco Pez, Sabrina's Cafe, Pub & Kitchen, and all the conveniences of South Street. Enter into the spacious, open-concept living and dining area, highlighted by two south-facing windows, in-laid hardwood flooring, recessed lighting, and elegant dentil crown molding. The floor plan flows seamlessly into the dining area and continues into the kitchen, which is centered around a large island—perfect for entertaining or casual dining. The kitchen boasts rich wood cabinetry, a classic subway tile backsplash, LG stainless steel appliances, neutral marble flooring and granite countertops. From the kitchen, step out through sliding glass doors onto a Trex-decked patio with built-in seating, ideal for al fresco dining and grilling. The second level features two bright and airy bedrooms, each with ceiling fans and generous closet space. The stunningly renovated (2023) hallway bathroom separates the two bedrooms and includes white hexagon tile flooring, vertically stacked subway tile in the shower, a modern wooden vanity, and an LG ThinQ washer and dryer for added convenience. The entire third floor is dedicated to the primary suite,

